

*Welcome!*

**Orientation for  
English as a Second Language  
(ESL)**

The  
**Grammar Proficiency  
Assessment**

will allow us to determine  
your individual level of  
English

**Level VI**

**Level V**

**Level IV**

**Level III**

\*\*\*\*

**Level II**

\*\*\*\*

**Level IB**

**Level IA**

\*\*\*\*

**Literacy**

## **ESL Courses:**

**Each class:**

**\$305.00**

**35 hours of classroom  
instruction**



**3.5 Continuing  
Education Units (CEU's)**



# Course Scheduling

## Classes are offered:

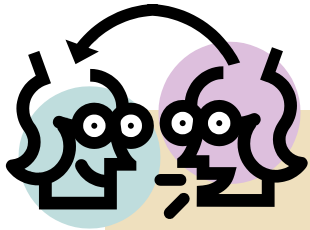
**Twice a week  
(M/W or T/Th):**

**1 hour, 45 minutes**

**Once a week  
(Saturdays):**

**3 1/2 hours**

# Specialized Classes:      \$315.00



## Advanced Conversation

**To enroll in Advanced Conversation, student must:**  
**successfully complete Level III first, or**  
**make a 71 or higher on the English Grammar Proficiency test.**

\*\*\*\*\*

## Composition for Students of Intermediate English



**To enroll in Composition, student must:**  
**successfully complete Level IV first, or**  
**make an 81 or higher on the grammar test.**

# ESL Course Requirements

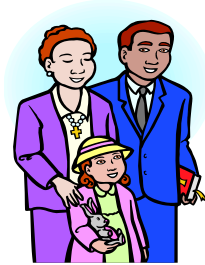
## ATTENDANCE:

Students must attend **80% of all class sessions**

- \* **16 out of 20 classes** → Weekdays/Evenings
- \* **8 out of 10 classes** → Saturdays

and pass the final exam. 😊

# Au pairs



Make sure your **host family**  
**understands** about the  
**attendance requirements.**

# Books !



**Are required on the first day of class.**

**Can be purchased in the Bookstore.**

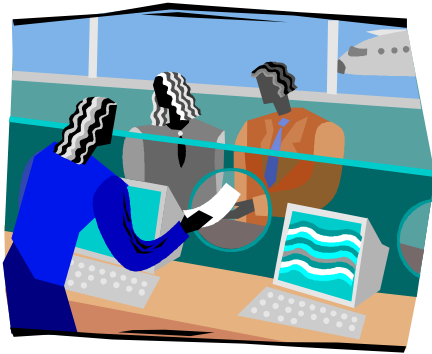
**Monday – Thursday**

**4:00 pm - 8:00 pm**

**Saturday 8:30 am - 11:30 am**

# 3 Ways to Register for a class:

**In person**



**Phone**



**Online**



# Refund Policy for Withdrawals and Transfers

**100%** refund for all withdrawals or transfers made more than 2 business days (M-F) before the first day of class.

**80%** refund for all withdrawals or transfers made 1 or 2 business days (M-F) before the first day of class.

**0%** refund for all withdrawals or transfers made the day class begins or any time following.



# The Placement Test

## The English Grammar Proficiency Assessment

- 100 Questions
- 45 minutes
- All at one sitting

Link: <http://www.ccpe.kennesaw.edu/esl/>

# Good luck !



Contact us with any questions:

**ESL/TESOL/Languages Department**

Email: [languages@kennesaw.edu](mailto:languages@kennesaw.edu)

Phone: 770-423-6765